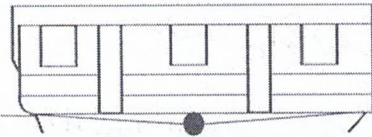
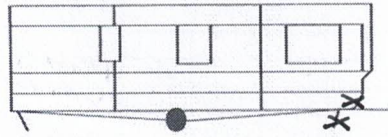


						Comments	
<b>Heater</b>							
Heater/ Combi Boiler	—					NO KEY	
Heater Cowl	—						
<b>Hallway</b>							
Door			—			Requires adjustment	
Carpet/ Lino / Trim	—						
Kick / Skirting Boards	—						
Door Handles & Latches	—						
Wall Boards	—						
Radiators/ Electric Panel Heater	X						
Ceiling Boards	—						
Wall Ceiling Lights, Bulbs, Spots & Shades	—						
<b>General</b>							
Carbon Monoxide Alarm	2	—					
Smoke Alarm	4	—					
<b>Exterior</b>							
Chassis				—	—	Transport Damage 6 Go Front Cross member & front O/S corner steady	
Wheels/ Tyres	—						
Corner Steadies				—	—		
Jockey Wheel/ A Frame	—						
Panels	—						
Windows to be opened, checked & adj	—						
Doors - locked/unlocked adjusted	—						
Door Handles / hinges x? / Colour? WHT	—						
Door Retains	—						
Exterior / Spot Lights	—						
Down Pipes	—						
Gutters/ Brackets / Colour?	—						
Roof	—						
<b>Miscellaneous</b>							

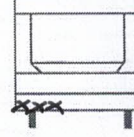
Door Side



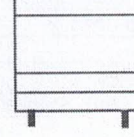
Off Side



Front



Back



I hereby agree that Surf Bay Leisure have undertaken a Pre-Occupation Inspection on the above caravan and accept and agree with the findings shown above and confirm apart from those mentioned there are no items missing, damaged, or that require attention.

Park Signature..... Date.....